

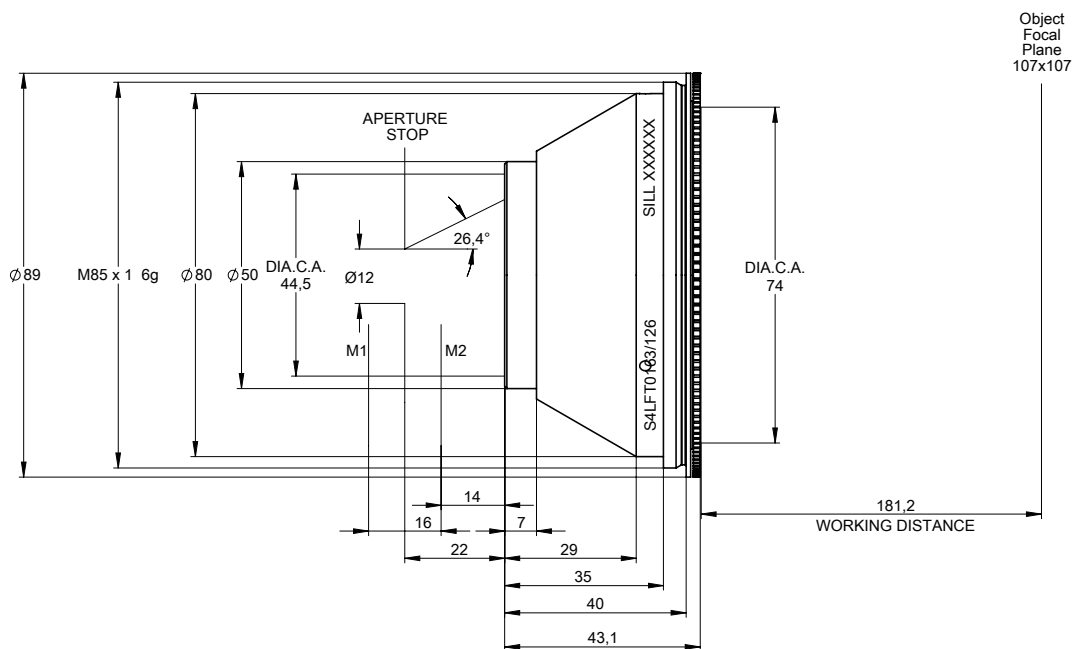
DATA SHEET

S4LFT0163/126

F-Theta
standard - optical glass
1064 nm



outline drawing

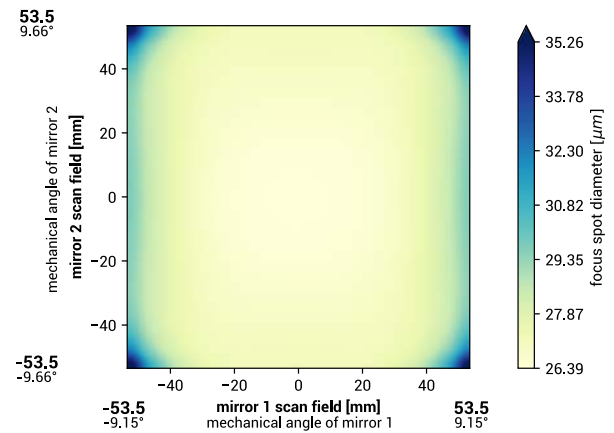


DATA SHEET

specifications

article number	S4LFT0163/126
design wavelength [nm]	1064
effective focal length [mm]	162.4
working distance [mm]	181.2
max. entrance beam-Ø [mm]	12.0
aperture stop distance [mm]	22
scan area for a 2 mirror system with mirror distance from lens housing for mirror 2 / mirror 1 [mm x mm]	107 x 107 14.0 / 30.0
max. telecentricity error [°]	15.0
total transmission [%]	> 97
absorption [ppm]	not specified
lens material	optical glass
LIDT (coating)	5.0 J/cm ² per 1ns pulse at 50Hz
SP and USP usable	no
weight [kg]	0.3
cover glass	S4LPG0005/126
cleanliness	not specified

spot



spot diameter at 86.5 % level for a Gaussian beam ($M^2 = 1$) with 12.0 mm diameter at $1/e^2$, clipped at 12.0 mm field size and mirror distances as given above for a two mirror scan system

back reflection positions

back reflections [mm] for 1064	
4.87	
5.36	
46.41	
46.8	
81.19	
2.207.18	
0	
0	
0	
0	

remarks

The stated values are based on a vignetting of less than 1 %.

Effective focal length and working distance have a tolerance of +/- 1.5 %.

Absorption tolerance +/- 25 %. Absorption may increase. Correct cleaning establishes original condition.